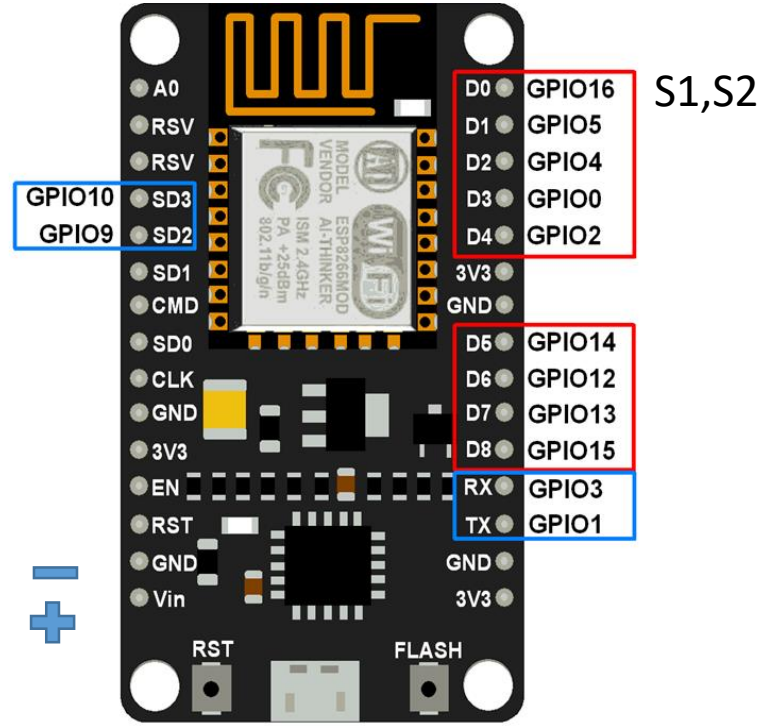
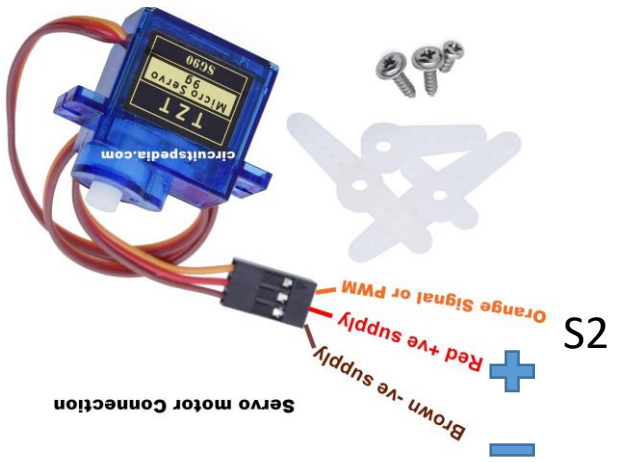


Controlling two servomotor using single nodemcu using blynk app

Dinesh

ISRO

Bangalore



```
#include <Servo.h>
#define BLYNK_PRINT Serial
#include <ESP8266WiFi.h>
#include <BlynkSimpleEsp8266.h>

Servo servo;
char auth[] = "Bwjxwb0KSg6YC2tep0ssqn6zrwT0LExN";
char ssid[] = "Xiaomi_A5A0";
char pass[] = "shuchi00";
int x;

BLYNK_WRITE(V0) {x = param.asInt();}

void setup() {
  Serial.begin(9600);
  pinMode(D1, OUTPUT);
  servo.attach(D0); // 15 means D8 pin of ESP8266
  Blynk.begin(auth, ssid, pass, IPAddress(192,168,0,115), 8080);
}

void loop()
{
  Blynk.run();
  Serial.print("Angle = ");
  Serial.println(x);
  servo.write(x);
  delay(1000);
  if (x > 90) { digitalWrite(D1, HIGH); } else{ digitalWrite(D1, LOW); }
}
```