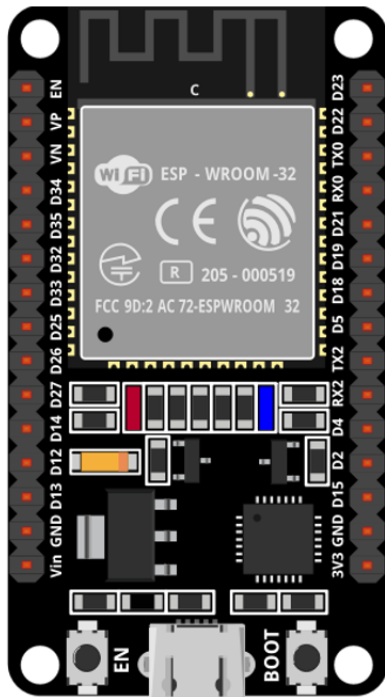




I2C Device Scanner

DINESH KUMAR
ISRO SATELLITE CENTER
BANGALORE



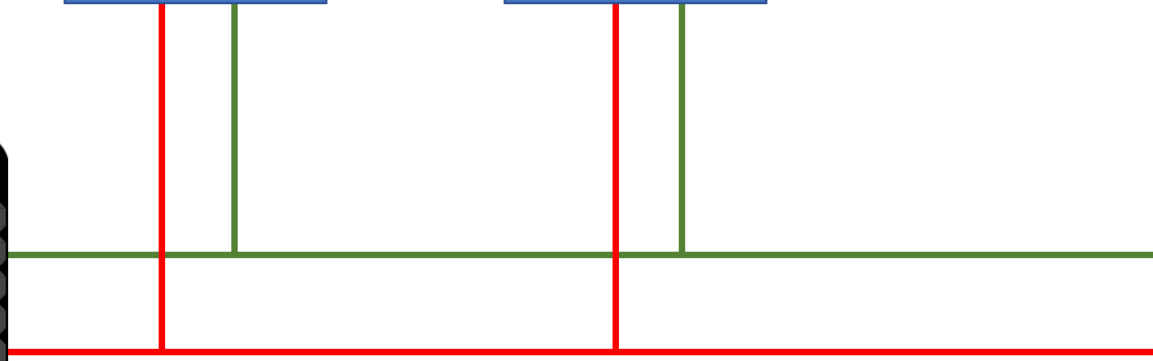
I2C Master

I2C Slave
Device 1
Address:0x01

I2C Slave
Device 2
Address:0x02

I2C SCL

I2C SDA



```
#include <Wire.h>

void setup() {
  Serial.begin (9600);
  while (!Serial) // Waiting for serial connection
  {
  }

  Serial.println ();
  Serial.println ("I2C scanner. Scanning ...");
  byte count = 0;

  Wire.begin();
  for (byte i = 8; i < 120; i++)
  {
    Wire.beginTransmission (i);
    if (Wire.endTransmission () == 0)
    {
      Serial.print ("Found address: ");
      Serial.print (i, DEC);
      Serial.print (" (0x");
      Serial.print (i, HEX);
      Serial.println (");");
      count++;
      delay (1); // maybe unneeded?
    } // end of good response
  } // end of for loop
  Serial.println ("Done.");
  Serial.print ("Found ");
  Serial.print (count, DEC);
  Serial.println (" device(s).");
} // end of setup

void loop() {}
```