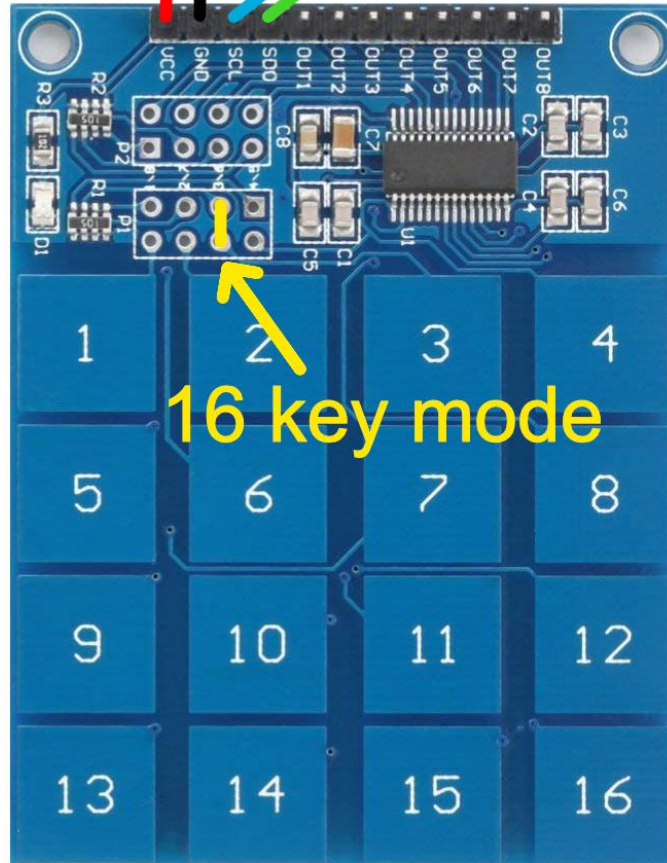
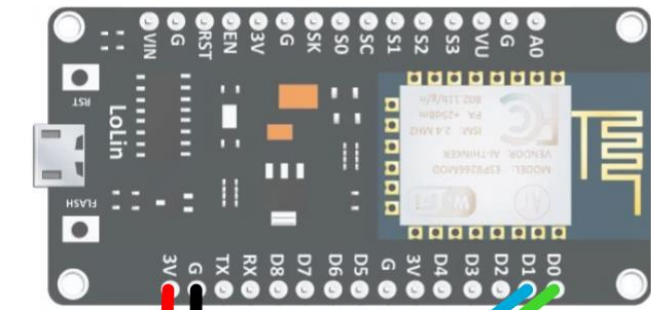


TTP229 Touch Keypad(4x4)

Dinesh Kumar

ISRO Satellite Center

Bangalore



16 key mode

```
#define SCL5
#define SDO 4
byte Key;
byte Read_TTP229_Keypad(void)
{
  byte Num;
  byte Key_State = 0;
  for(Num = 1; Num <= 16; Num++)
  {
    digitalWrite(SCL, LOW);
    if (!digitalRead(SDO))
      Key_State = Num;
    digitalWrite(SCL, HIGH);
  }
  return Key_State;
}
void setup()
{
  Serial.begin(9600);
  pinMode(SCL, OUTPUT);
  pinMode(SDO, INPUT);
}
void loop()
{
  Key = Read_TTP229_Keypad();
  if (Key)
    Serial.println(Key);
  delay(1000);
}
```